

SEN INFORMATION REPORT



WE ARE PROUD TO TELL YOU
ABOUT HOW WE SUPPORT
CHILDREN WITH ADDITIONAL
NEEDS IN OUR SCHOOL



Who can I talk to about my child's special educational needs?



My child's Class Teacher:

They are responsible for ensuring your child is making progress and liaising with the SENDCO about the support they may need. They should be the first person you speak to about any concerns.



The SENDCo:

Jo Lawrence
She is responsible for coordinating the support for pupils with SEND, providing support for staff and communicating with parents.
j.lawrence@consortiumtrust.org.uk

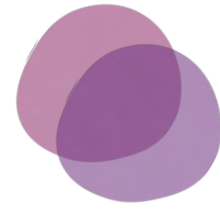


Senior Leads in School:

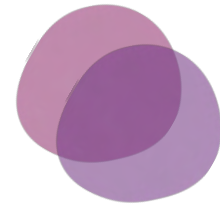
Please speak to Katy Last, Jo Garnett or Christina Pates if you cannot meet the class teacher or SENDCo for any reason.

The SEND Trustee: The Trust has a SEND Trustee who can be contacted through the school. They are responsible for monitoring the school's SEND Provision through regular contact with central team and school staff.

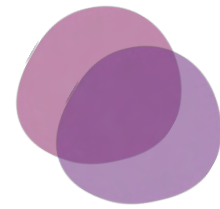
How do teachers at my child's school identify and assess pupils with SEND?



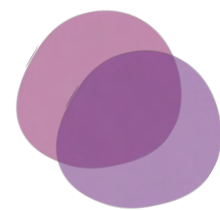
We gather information from parents/carers, from teachers, from pupils, and from other agencies such as medical professionals or therapists.



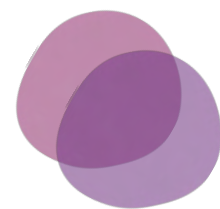
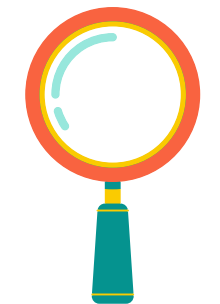
We use various standardised assessments to monitor your child's progress in school.



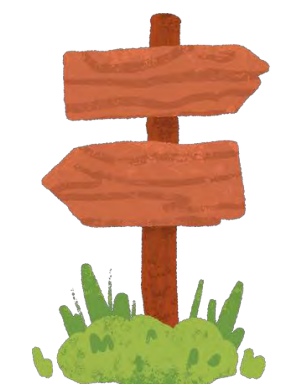
We use the 7C's assessment and intervention toolkit to help us set targets for your child.



We observe children and use our professional knowledge and experience to see what support they might need.

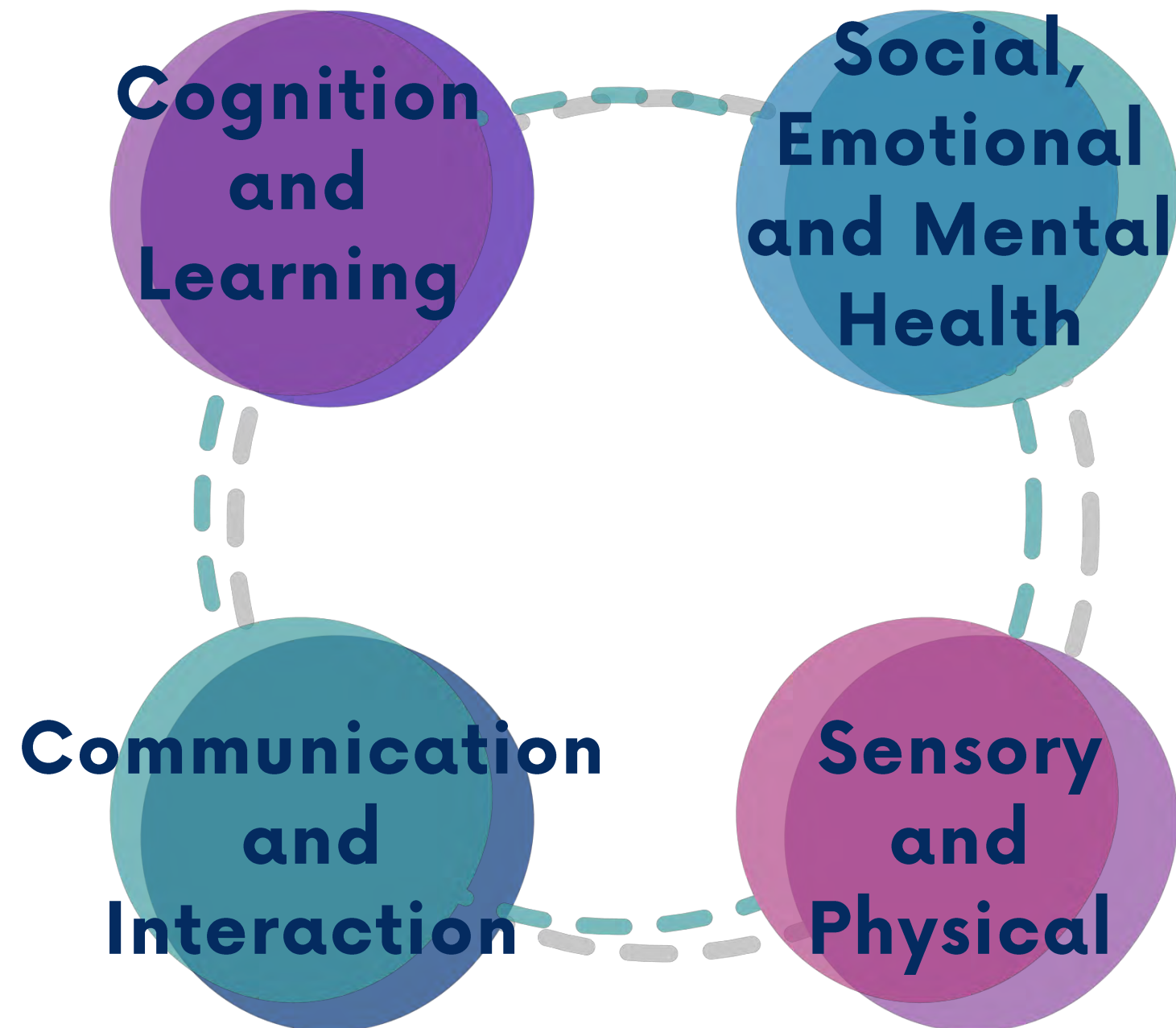


We refer children to other agencies for further assessment where needed, in consultation with parents/carers.



What kinds of SEND are provided for at my child's school?

There are four main broad areas of SEND:



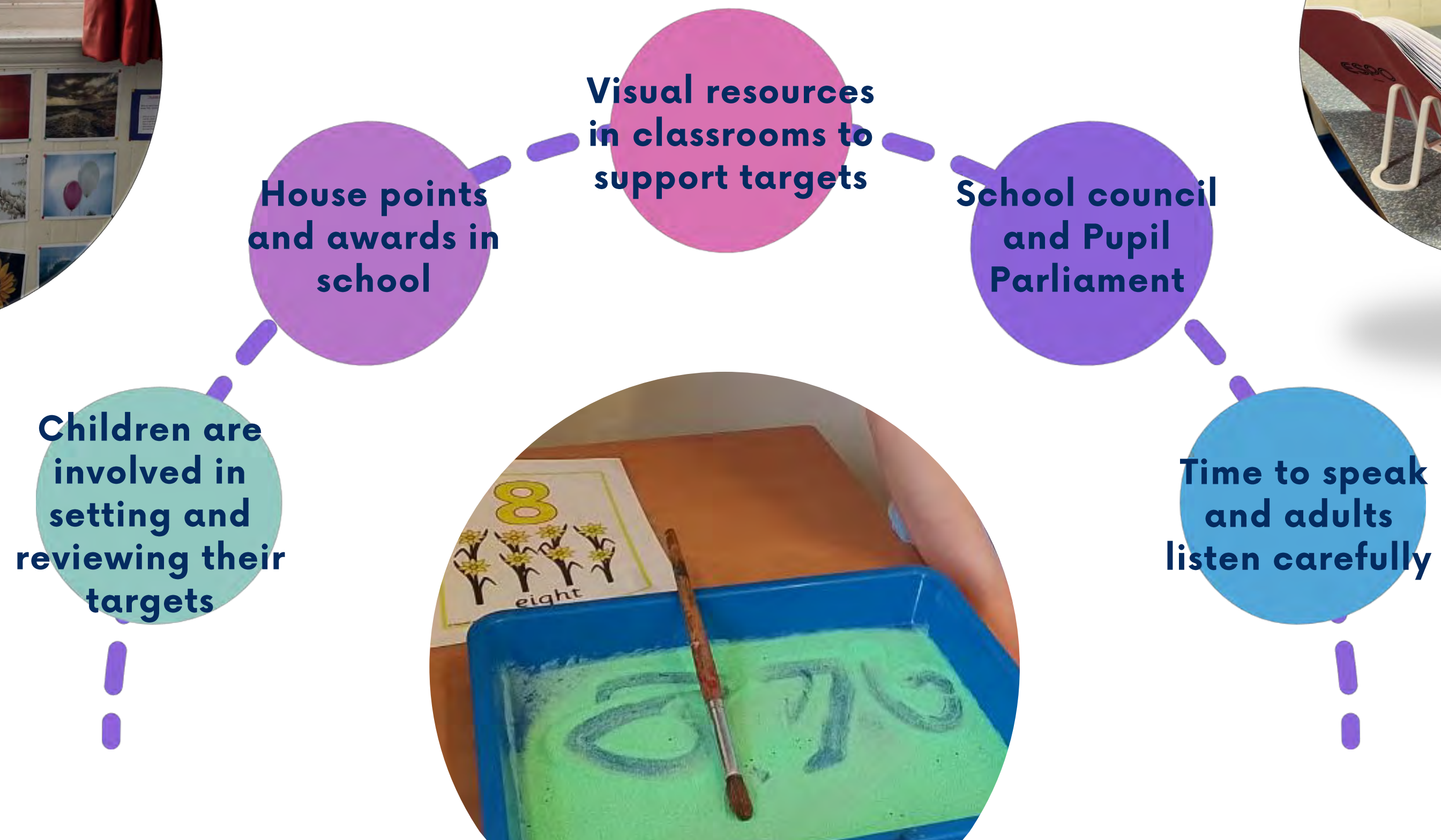
Every child's needs are considered on an individual basis at our school. Our school is experienced in supporting children with a range of needs including ADHD, autism, dyslexia or learning difficulties, motor difficulties, sensory needs, speech and language or communication difficulties, visual and hearing impairments. Yoxford and Peasehall Primary School is committed to inclusive learning and wellbeing for all our pupils.

How does the school communicate with the parents/ carers of children with SEND?

- Autumn and Spring term parents' meetings
- Spring term and end of year report
- Website
- Review meetings or consultation meetings
- Meetings with outside agencies
- School Facebook page
- E-mails
- Regular letters
- Appointments with staff
- Reading logs
- LearningPi



How do staff communicate with the children who have SEND?



How does the school provide children with SEND access to the whole curriculum and support their emotional well-being?

Yoxford and Peasenhall Primary School offers a unique curriculum which includes:



Formal Learning



Informal Learning



Personalised Learning



Extended School activities



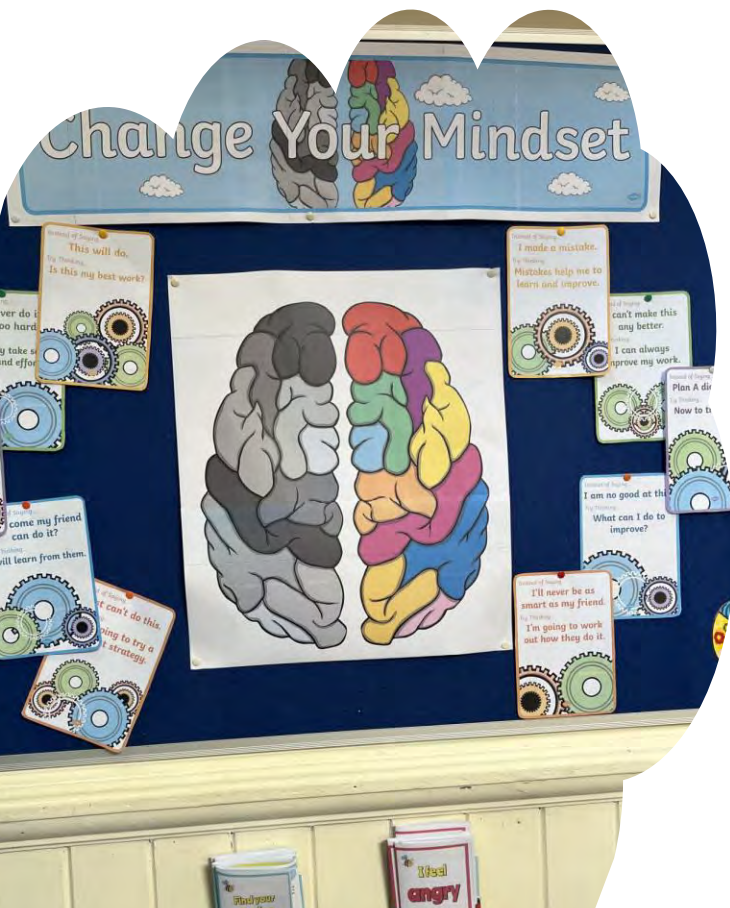
SENDCo makes sure all staff are aware of pupils with SEND so that they are included in all teacher's planning

Personalised Support Plans with regular review (at least termly). We currently use 7C's learning plans.



Opportunities for very small group and individual support

Lessons and learning spaces are adapted to take account of individual needs



What are the different types of support available at Yoxford and Peasehall Primary School?



-
-
-
-
-
-
-
-

All children receive quality first classroom teaching from highly motivated and enthusiastic teachers

Scaffolded and adapted work provided by the class teacher. Visual and concrete resources are often provided.

Intervention and support groups run inside and outside the classroom

Individual support inside and outside the classroom

Specialist monitoring and assessment from outside agencies where necessary and agreed with parents/carers

Trained and experienced teaching assistants provide a range of supports such as literacy interventions, pastoral support or behaviour support

Adapted curriculum and sensory activities for children not able to access age specific learning.

ELSA Support and interventions

These are some of the interventions that are used at Yoxford and Peasehall Primary School.



Nessy

Sensory breaks



Speech and Language

Phonics



Lego based intervention



Zones of Regulation



Attention Autism

How adults help me at school



Most support is delivered in the classroom by our experienced teaching assistants and teachers. Some interventions take place in quiet rooms such as the library or Blossom Room.

Teachers plan lessons and give scaffolded support to make sure all learners can reach their potential.

HOW IS EXTRA SUPPORT ALLOCATED TO PUPILS?

Decisions are based on the needs of the pupils and provision identified in EHCPs. The Academy Head, SENDCo and class teacher agree what resources, training and support is needed. This is reviewed regularly, and changes made as needed.

High Tariff Needs Funding can be applied for where pupils with severe or complex needs require an exceptionally high level of support.

Support might include intervention groups, or individual support in the classroom.



How does the school evaluate the effectiveness of provision for pupils with SEND?

Termly review of all pupils with SEND with the Academy Head, class teacher and SENDCo alongside discussion with parents/carers

Pre and post intervention data including use of specialist tools such as Boxall Profile, VSEND, 7C's, Engagement Model, Wellcomm

Monitoring in the classroom through lesson observations, Learning Walks, and book scrutiny. Pupil progress meetings with teachers



How accessible is the environment at Yoxford and Peasehall Primary School?



The school is mostly a single storey Victorian building with a couple of steps inside the building. The newer EYFS and KS1 block is fully accessible.



We have wide corridors and doors. We are a small school with limited space to store equipment. We have accessible changing and toilet facilities.



We have a shallow swimming pool.



The playground and field are flat. Provision can be made for a range of physical and sensory needs.

What other agencies does the school work with to support SEND children?



Where necessary, and in consultation with parents/carers, the school liaises with the following outside agencies in Suffolk and Norfolk:



What is the expertise of the staff and what training is provided at my child's school?

Qualified Teacher Status for all teachers except trainees

Jo Lawrence is the SENDCO with National Award for SEN Coordination. Katy Last is also a qualified Senior Mental Health Lead.

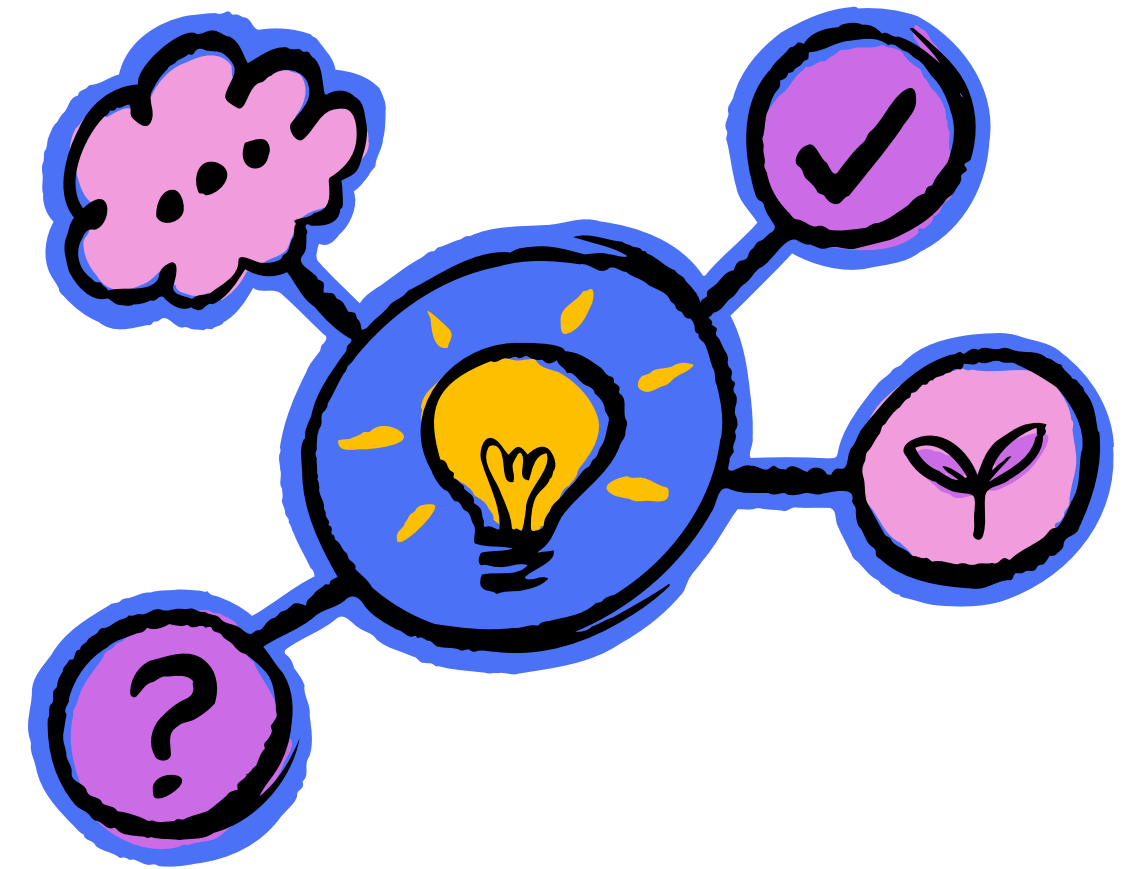
First Aiders and access within Consortium Trust to Mental Health First Aiders, Mental Health Champion

Safeguarding training

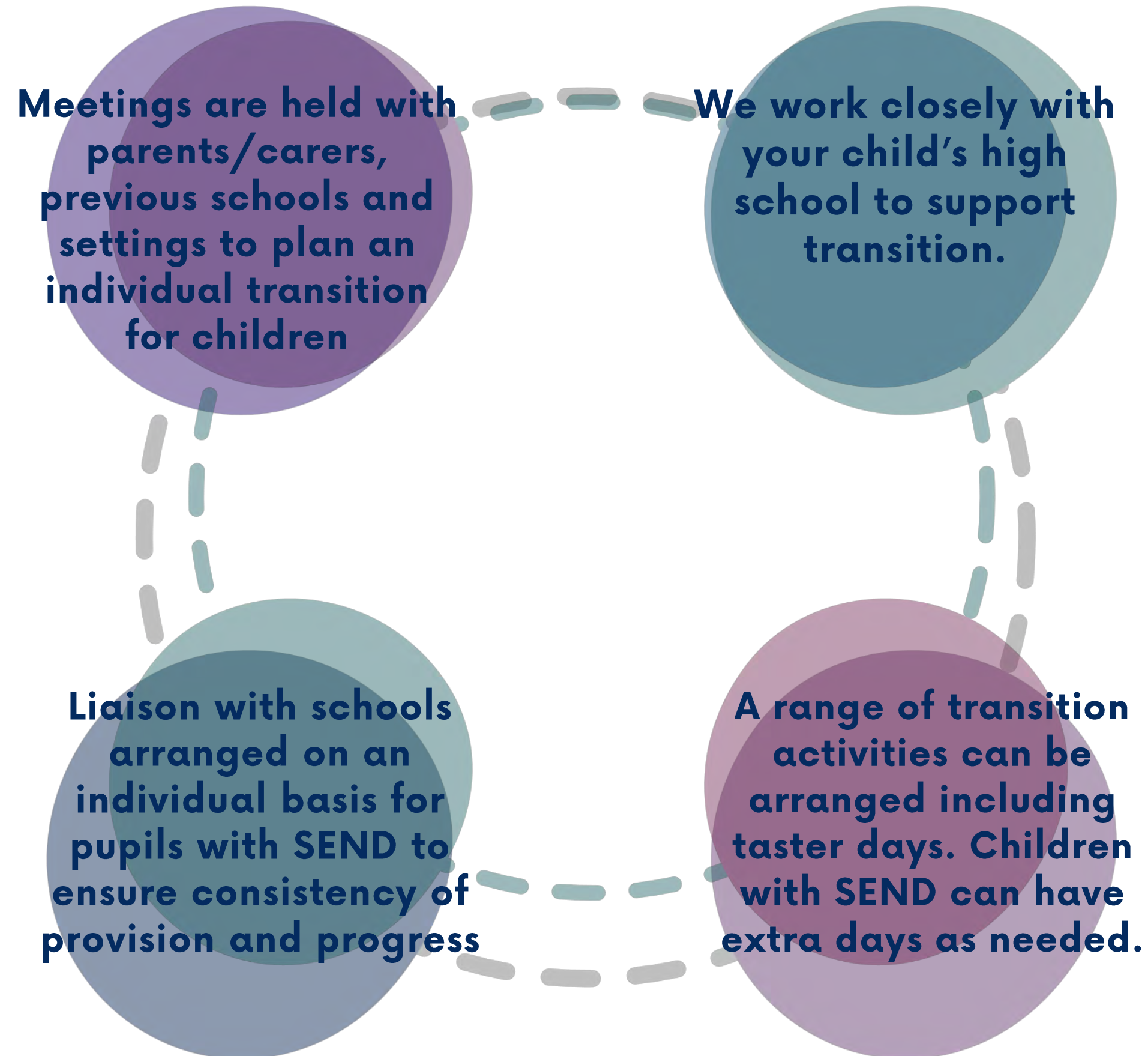
Trained Teaching Assistants/ Higher Level Teaching Assistants

School Safe Training/Behaviour Management/Manual Handling

On-going CPD for all staff including our Teaching Assistant Induction Programme



How is transition into and out of my child's school arranged?



Who, outside of school, can I turn to for advice and support if I am not happy?

We really want to work with families to make sure you and your children are happy and successful in our school. We are always here to listen. Please come and talk to us if you have any concerns.

Our complaints policy is on the school's website.

The Special Educational Needs and Disability Information, Advice and Support Service (SENDIASS) provide impartial information for the parents/carers of all children and young people with SEND, up to the age of 25.

SENDIASS in Suffolk <https://www.suffolksendiass.co.uk/>

SENDIASS in Norfolk <http://www.norfolksendpartnershiass.org.uk/>

In some circumstances you can appeal to the SEN and Disability Tribunal. <https://www.gov.uk/special-educational-needs-disability-tribunal>

All schools and Suffolk County Council or Norfolk County Council have complaints procedures which are followed.

More Information



Please read the Behaviour and Inclusion Policy and Teaching, Learning and Curriculum Policy on the Consortium Trust website.

You may also have heard about the 'local offer'. This is part of the Children and Families Act 2014. Local Authorities must publish a local offer setting out information about the provision in their area for children and young people with SEND. Schools contribute to the local offer by sending information to the local authority.

For information about Suffolk's Local Offer visit www.suffolklocaloffer.org.uk



For information about Norfolk's Local Offer visit <https://www.norfolk.gov.uk/SEND>



This SEND Information Report was reviewed in September 2024 and will be reviewed annually.

We value your feedback so please contact the Academy Head or SENDCo if you have any comments on this SEND Information Report.